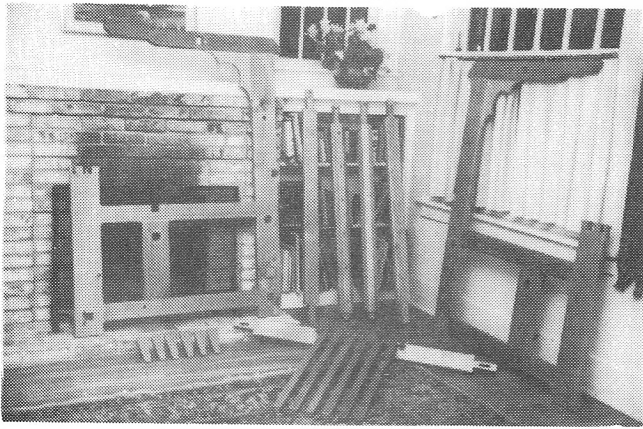


The Traditional Loom with a Difference



P.O. BOX 1640 • PALO ALTO, CA 94302 • TEL. 415-323-7016



1



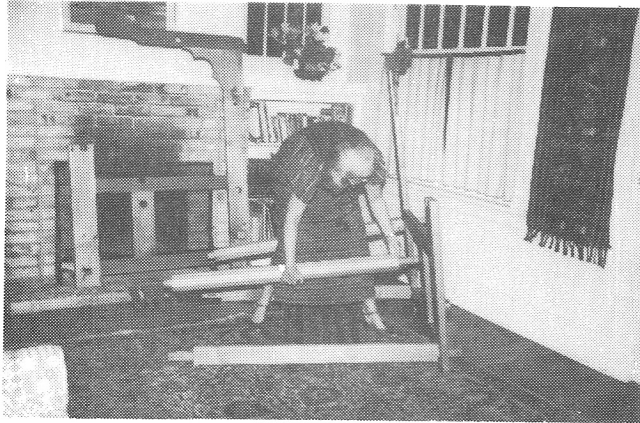
2



3



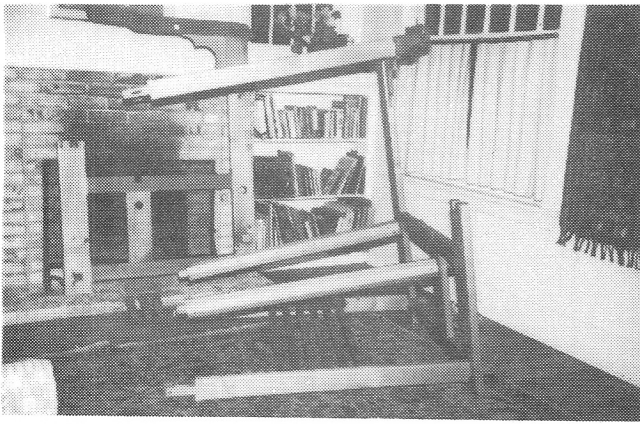
4



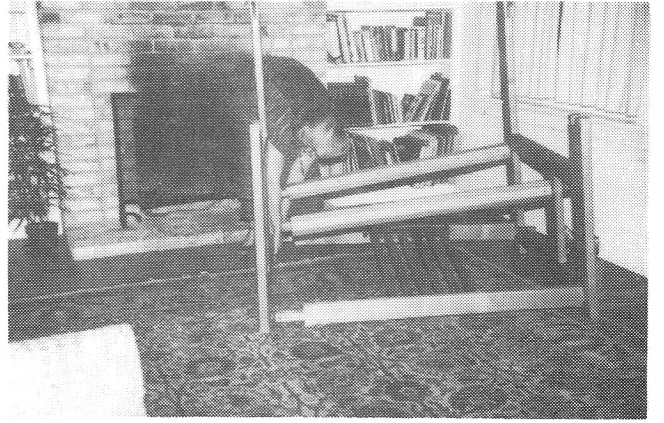
5



6

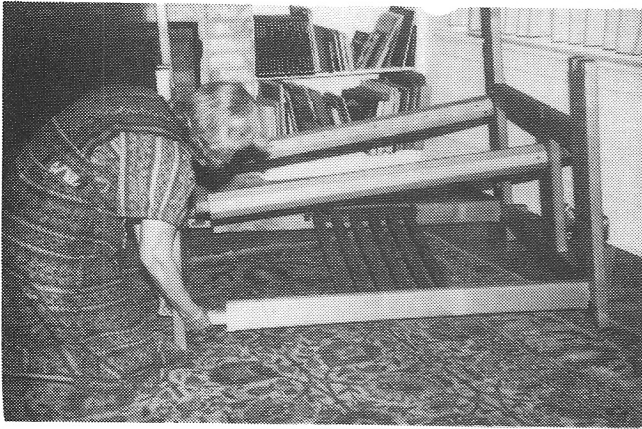


7

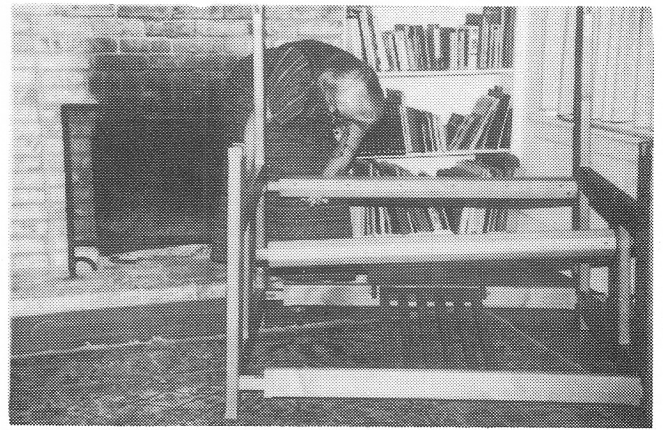


8

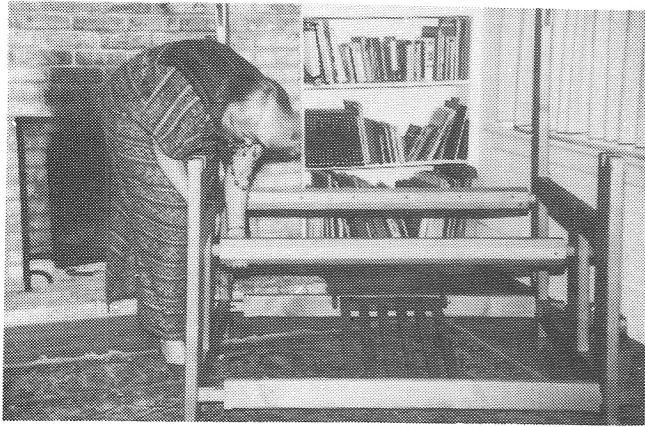




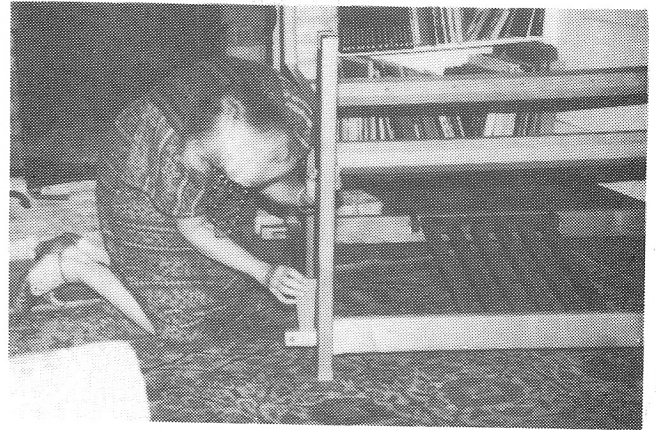
9



10



11



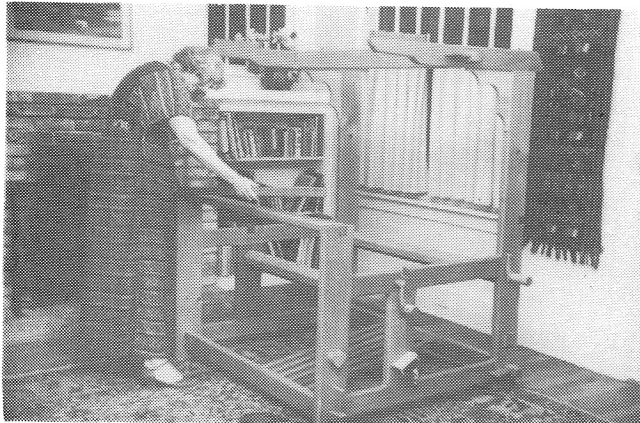
12



13



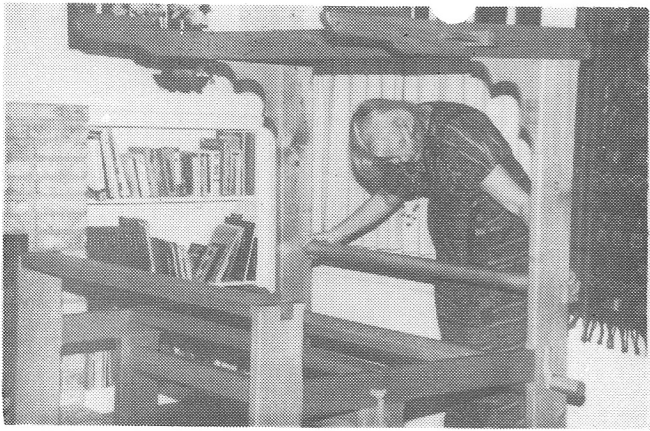
14



15



16



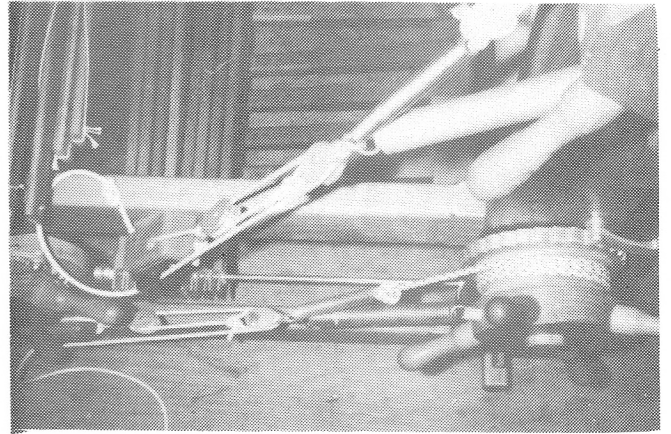
17



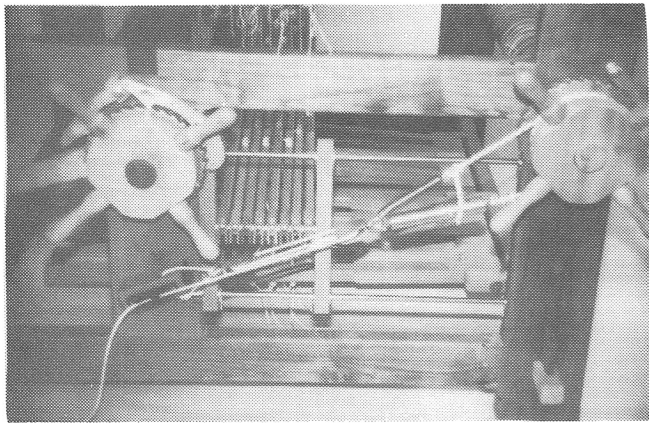
18



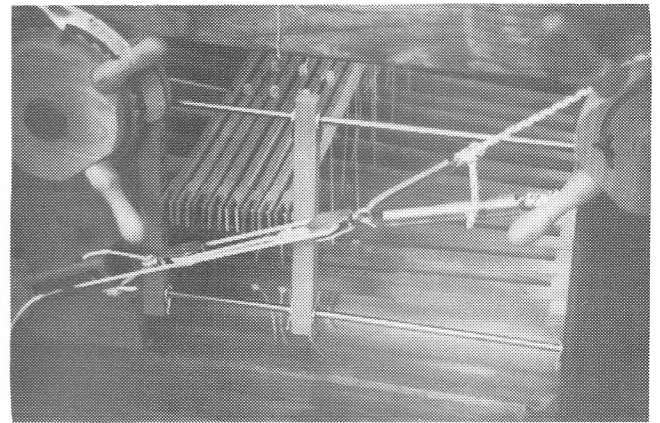
19



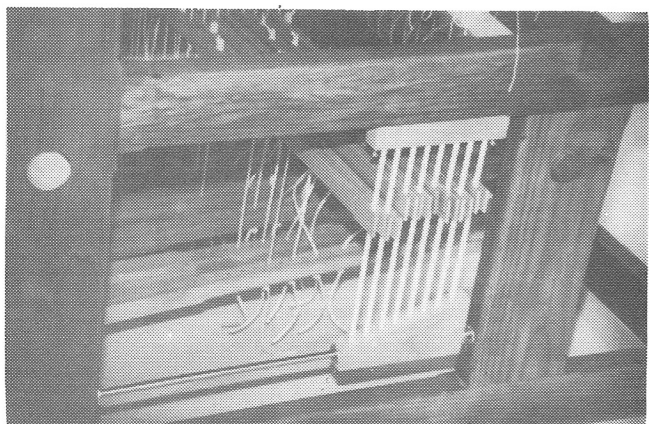
20



21



22



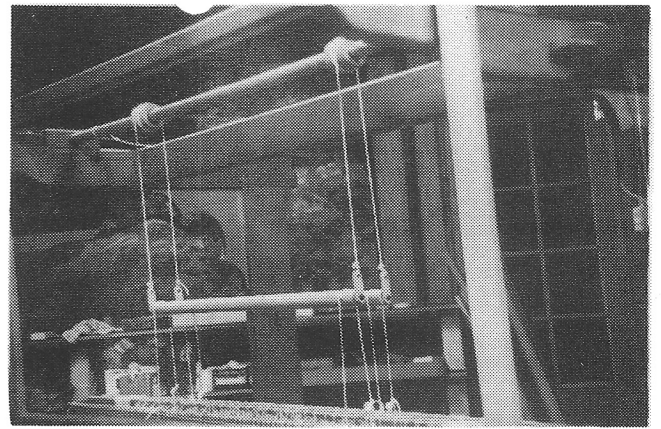
23



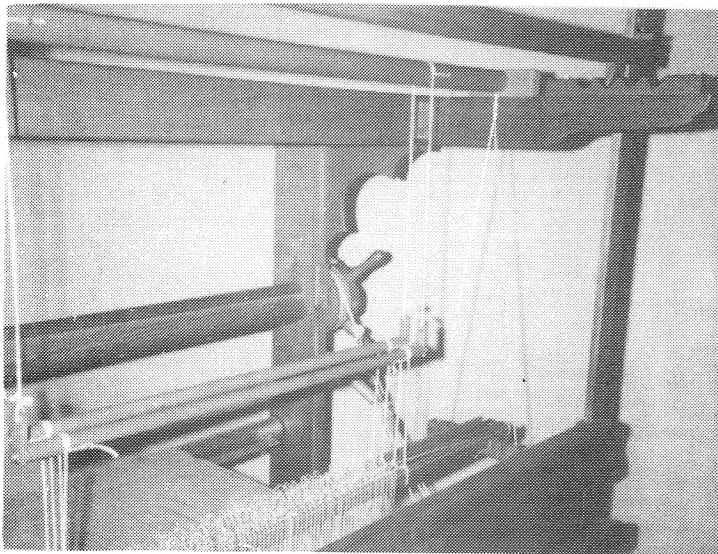
24



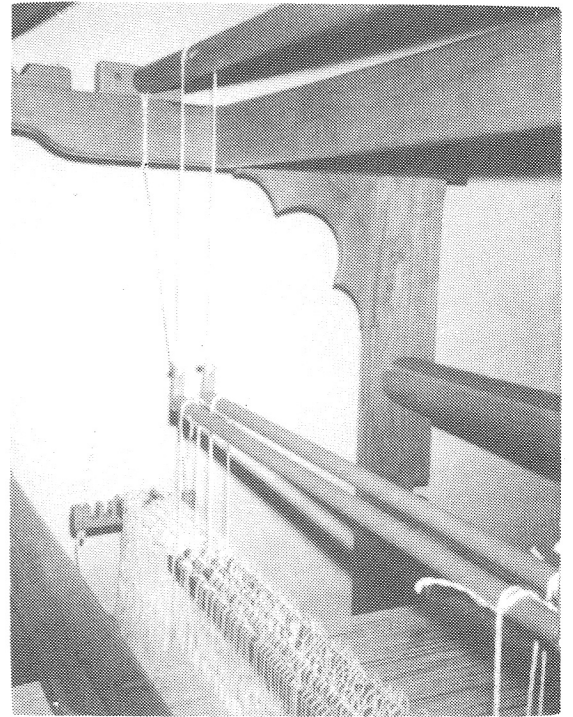
25



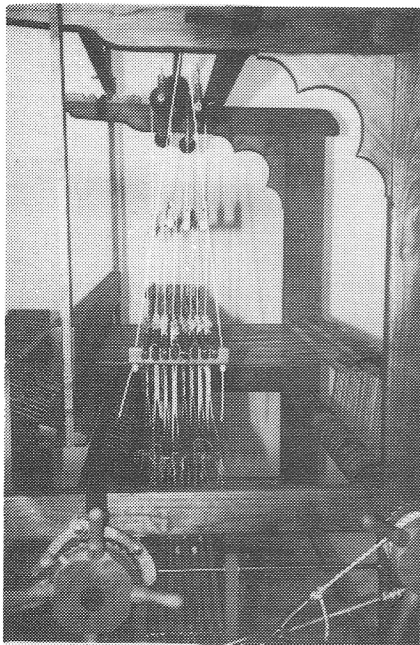
26



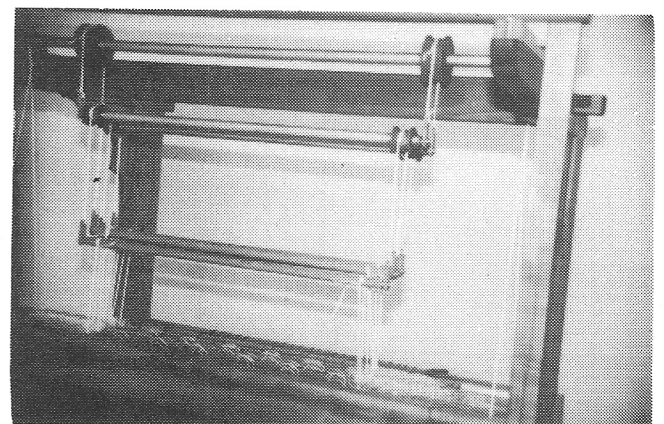
27



28

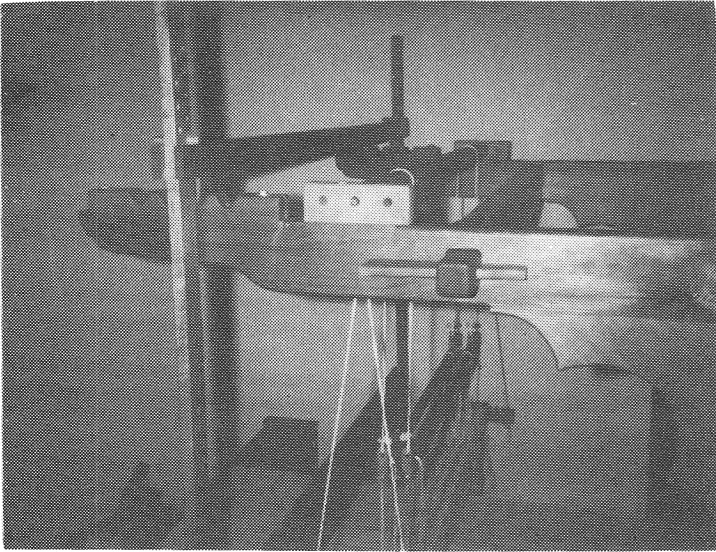


29

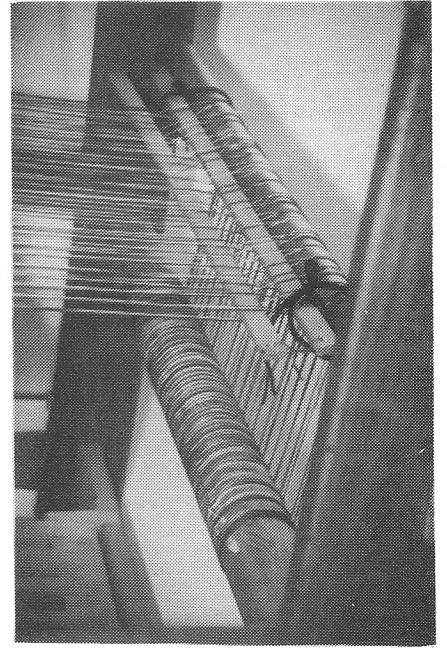


30

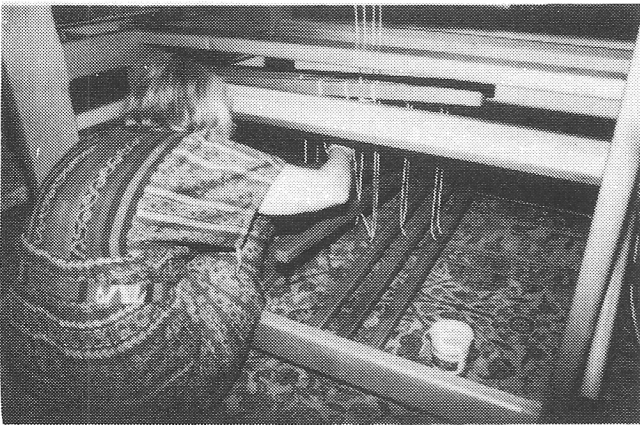




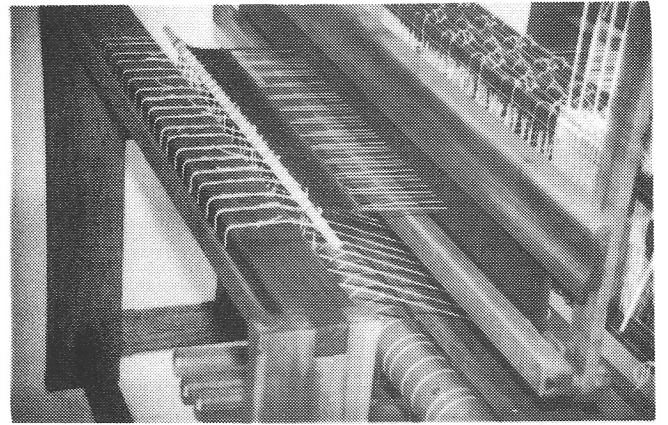
31



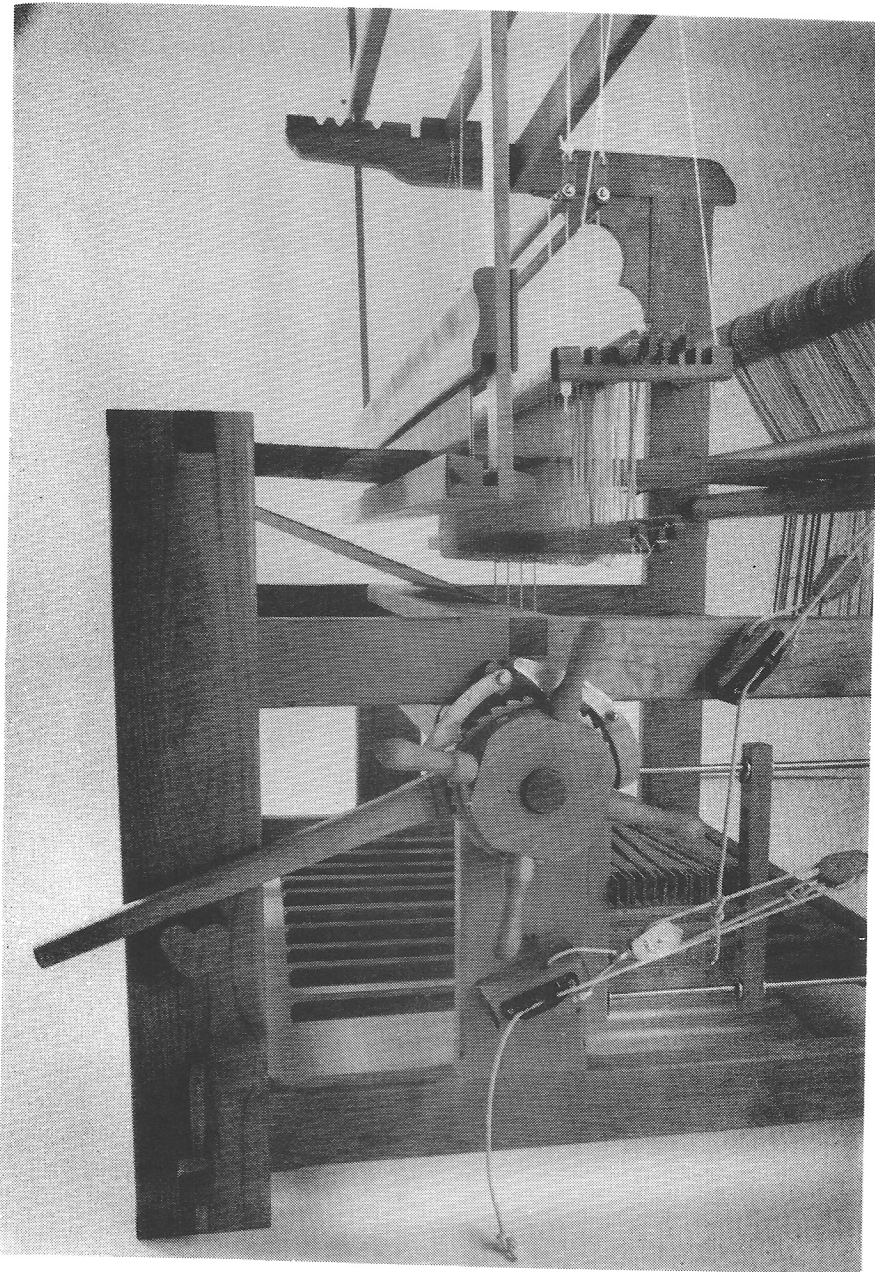
32



33

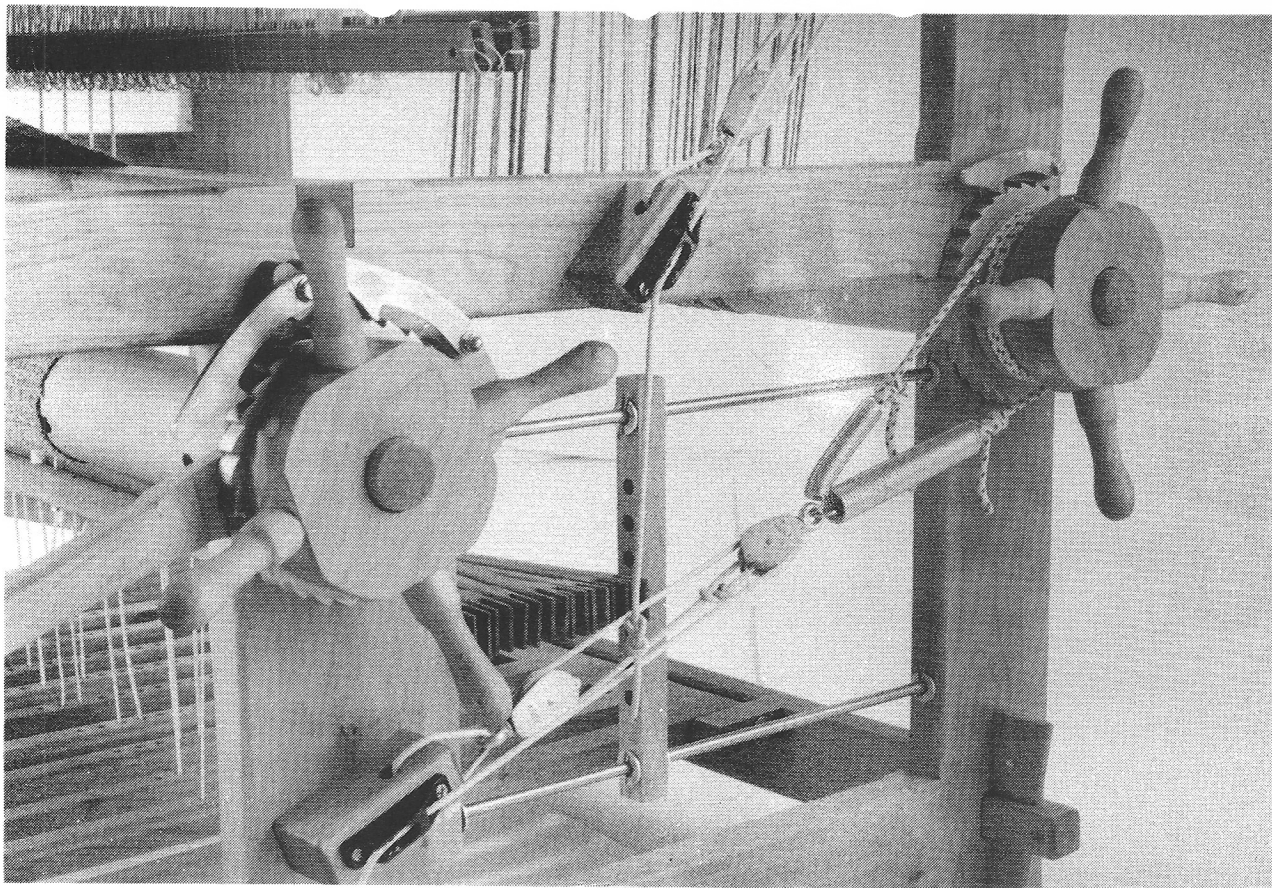


34

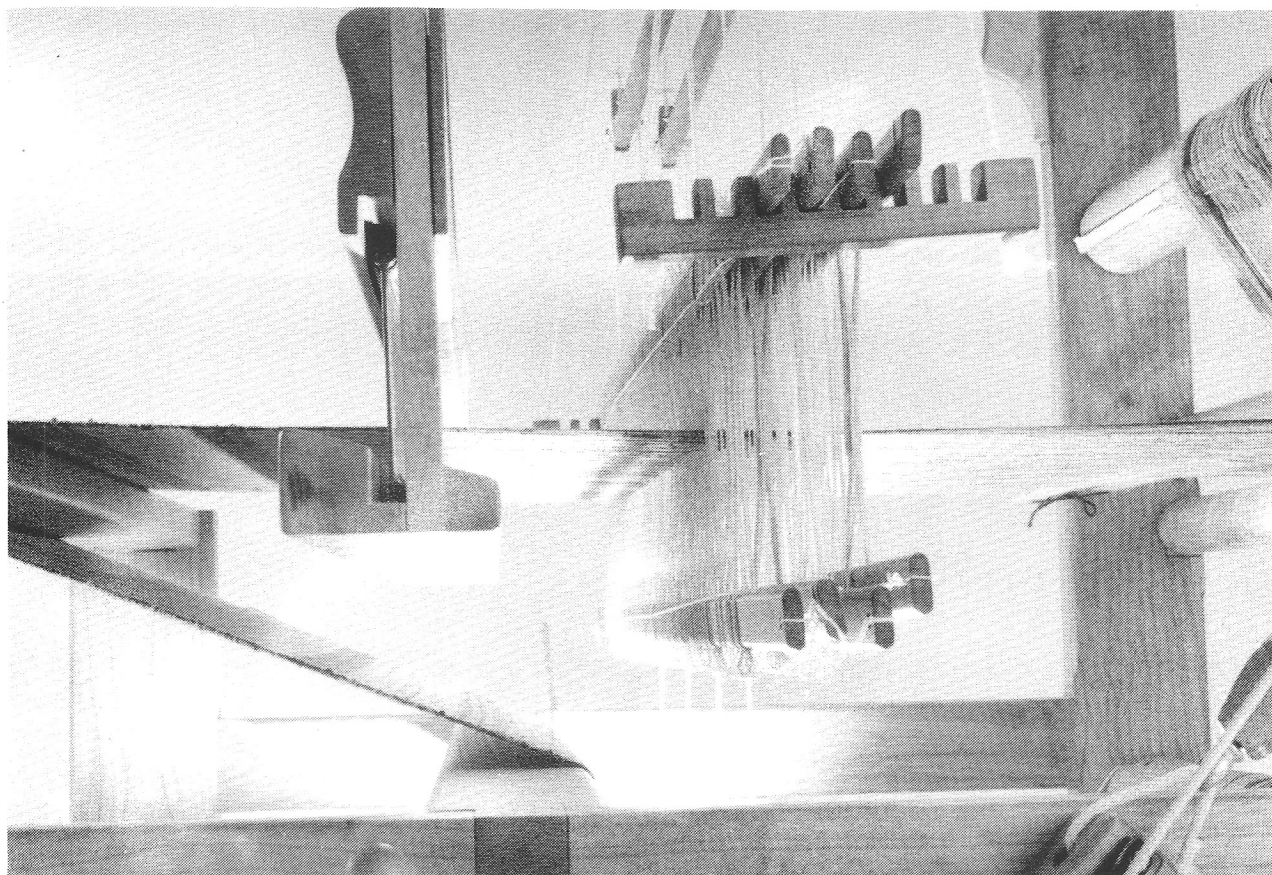


35





36



37



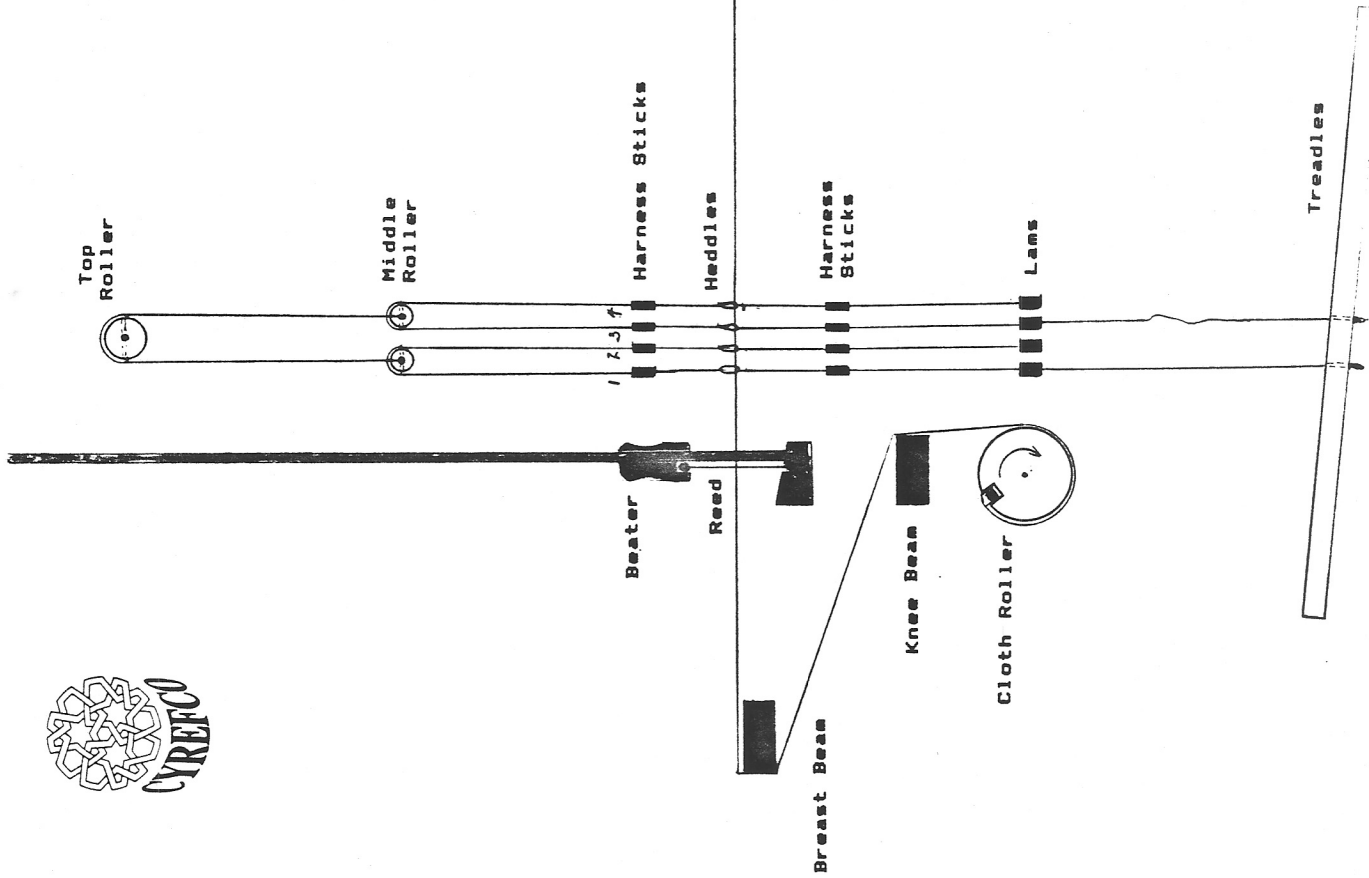


FOUR HARNESS TIE-UP

NO. OF CORDS (Texsolv)	USE	LENGTH (inches)	NUMBER OF COTTER PINS (Plastic)
4	Top harness roller to middle harness rollers	28	0
8	Middle harness rollers to top harness sticks	18	0
4	Center of bottom harness sticks to leas	21	4
12	Leas to treadles	14	32
2	Harness hanger cords	48	4

Total Texsolv polyester braided loop cord = 56 ft.
 56 ft. + 20% spare cord = 68 ft. (23 yards)

Total Texsolv plastic cotter pins required = 40
 40 + 20% spare cotter pins = 56



CYREFCO FOUR HARNESS LOOM
 WARPING DIAGRAM

Not To Scale